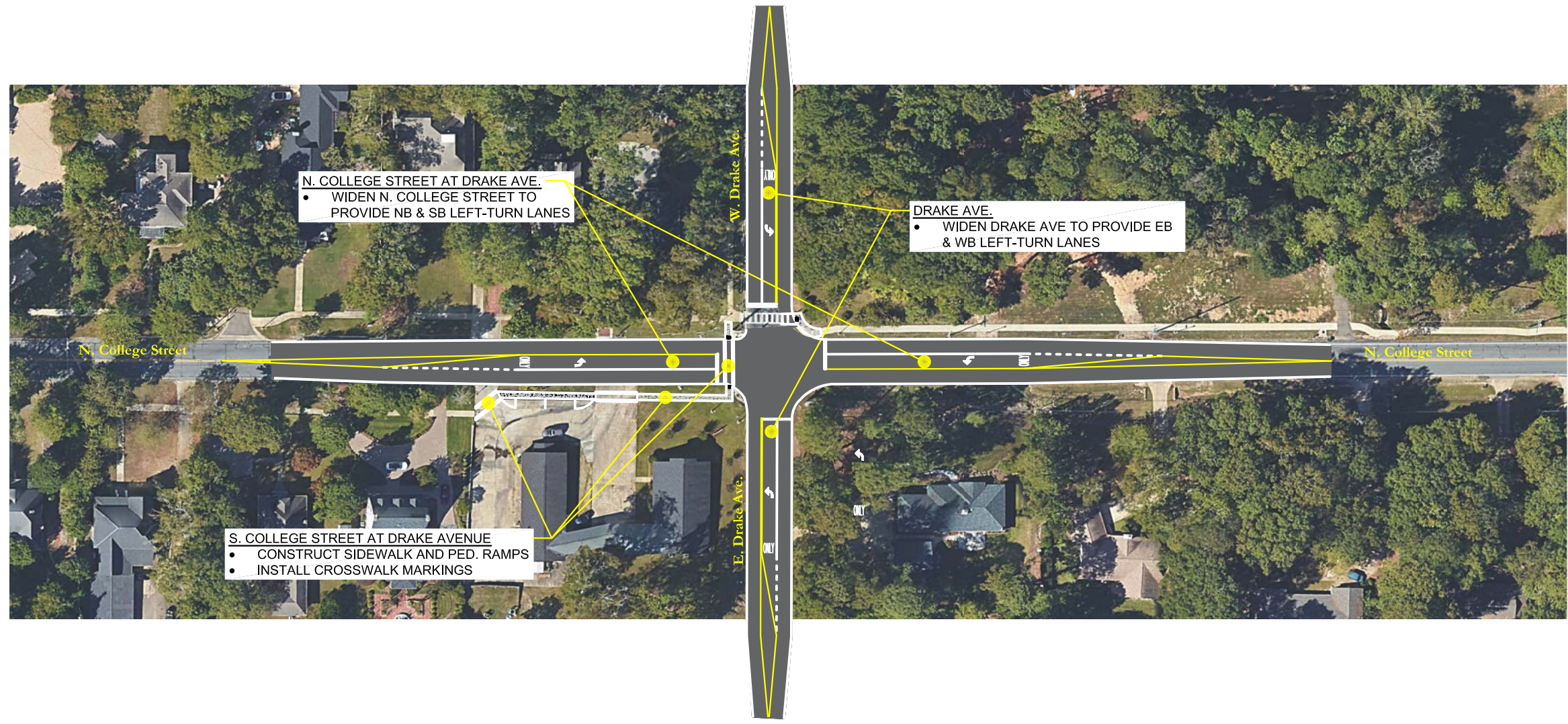


Section 4B:





Recommended
Improvement Projects
College Street





Project NCS1



Legend	
	Required Pavement
	Required Grass
	Required Sidewalk
	Required Ped. Ramp

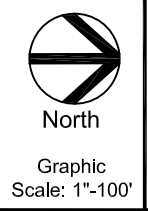
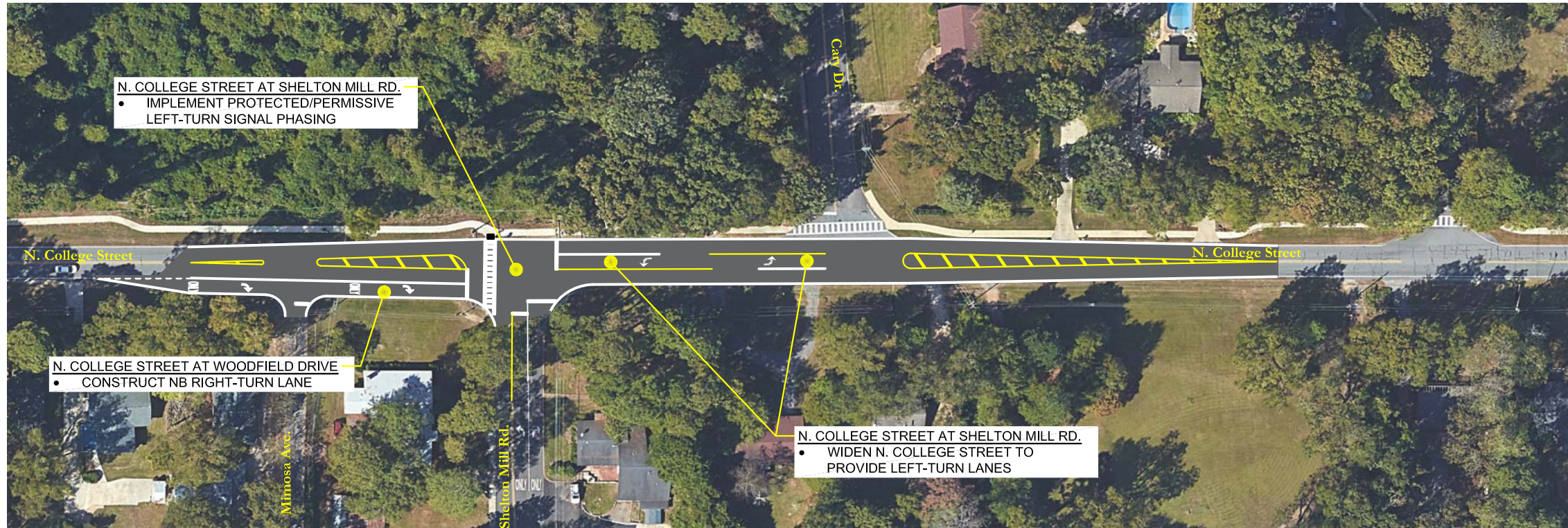


Figure 14
N. College St. at Drake Ave.
Existing Improvements

College Street
 Auburn, Alabama

October 2018 Page 32





	<p>Legend</p> <p> Required Pavement</p>	<p> North</p> <p>Graphic Scale: 1"=100'</p>	<p>Figure 17 N. College St. at Asheton Ln. Existing Improvements</p> <p>College Street February 2019 Auburn, Alabama Page 35</p>
--	---	---	--

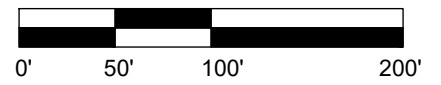
Relocate Crosswalk & Curb Ramps

Install WB Right Turn Lane



© 2018 Microsoft Corporation © 2018 DigitalGlobe ©CNES (2018) Distribution Airbus DS

Project NCS5

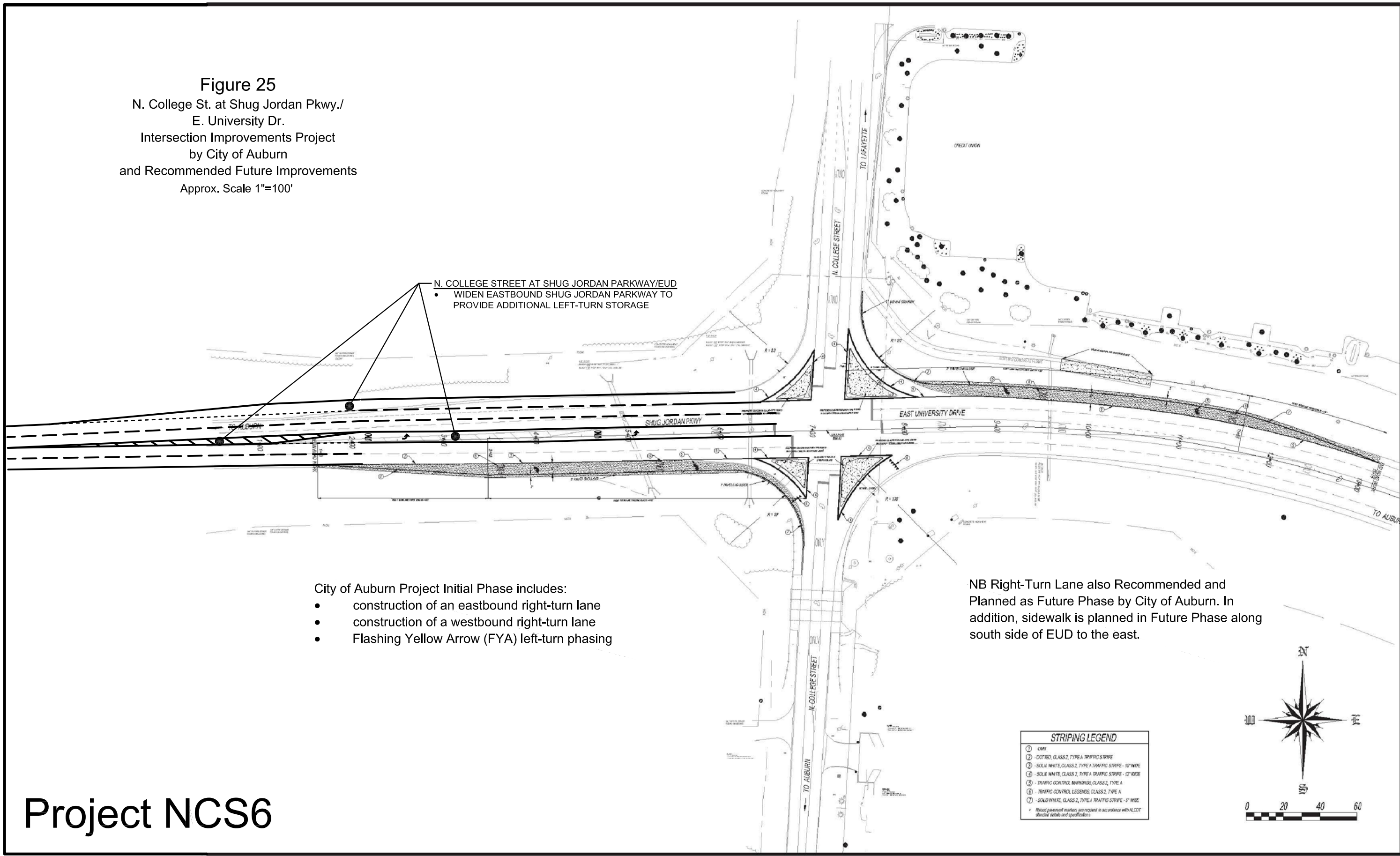


**Figure 14 - Future Conditions Improvements
Glenn Avenue Corridor - N College Street
Auburn, Alabama**

LEGEND

Scale: 1:50
Date: Oct 2018

Figure 25
 N. College St. at Shug Jordan Pkwy./
 E. University Dr.
 Intersection Improvements Project
 by City of Auburn
 and Recommended Future Improvements
 Approx. Scale 1"=100'



N. COLLEGE STREET AT SHUG JORDAN PARKWAY/EUD

- WIDEN EASTBOUND SHUG JORDAN PARKWAY TO PROVIDE ADDITIONAL LEFT-TURN STORAGE

- City of Auburn Project Initial Phase includes:
- construction of an eastbound right-turn lane
 - construction of a westbound right-turn lane
 - Flashing Yellow Arrow (FYA) left-turn phasing

NB Right-Turn Lane also Recommended and Planned as Future Phase by City of Auburn. In addition, sidewalk is planned in Future Phase along south side of EUD to the east.

STRIPING LEGEND

- ① - DMF
- ② - DOTTED, CLASS 2, TYPE A TRAFFIC STRIPE
- ③ - SOLID WHITE, CLASS 2, TYPE A TRAFFIC STRIPE - 10" WIDE
- ④ - SOLID WHITE, CLASS 2, TYPE A TRAFFIC STRIPE - 12" WIDE
- ⑤ - TRAFFIC CONTROL MARKINGS, CLASS 2, TYPE A
- ⑥ - TRAFFIC CONTROL LEGENDS, CLASS 2, TYPE A
- ⑦ - SOLID WHITE, CLASS 2, TYPE A TRAFFIC STRIPE - 5" WIDE

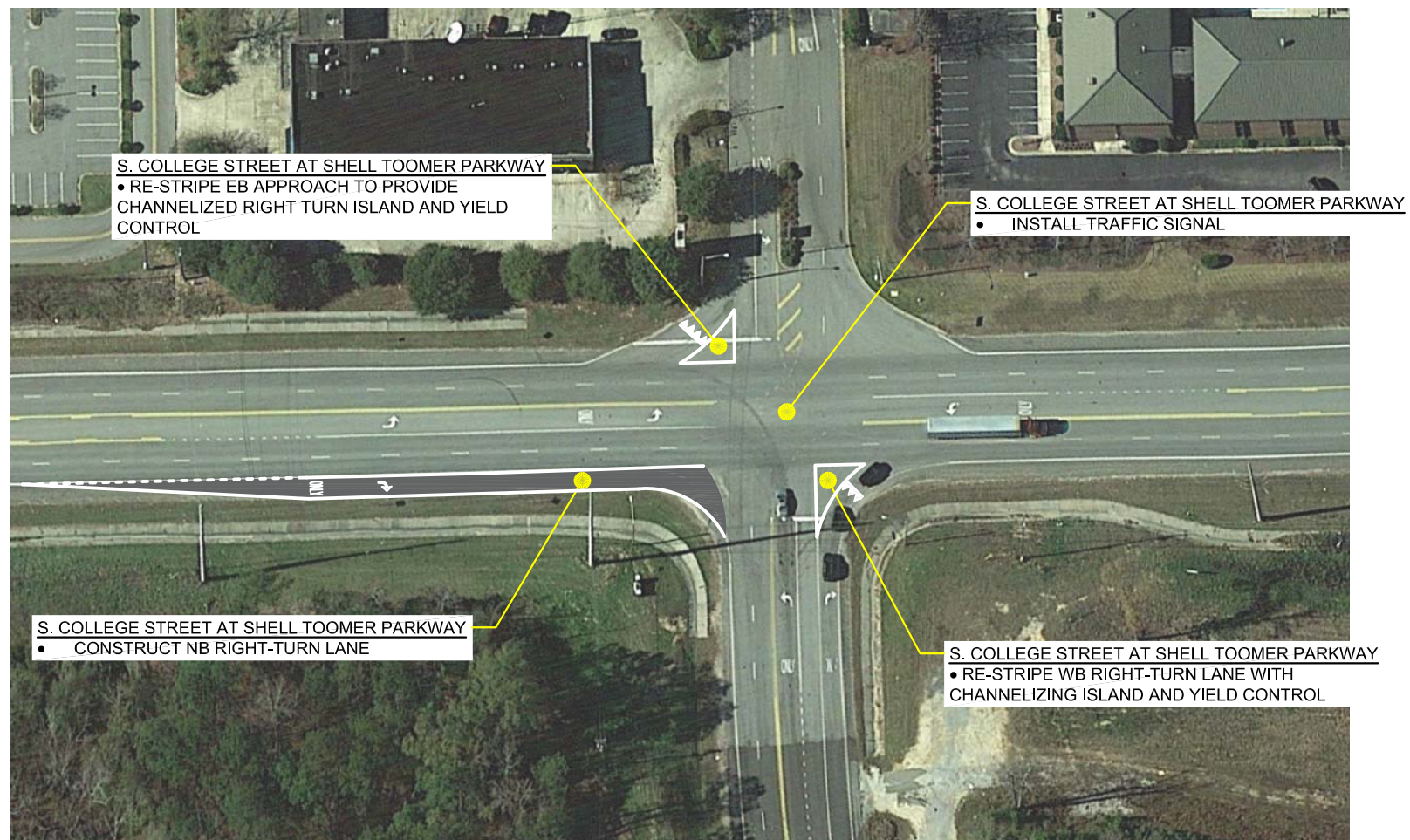
* Raised pavement markers are required in accordance with ALDOT District 6660 and specifications.



Project NCS6

NO.	CHECK	DATE	DESCRIPTION

DESIGNED: BS
 CHECKED: EPW
 DATE: AUGUST 29, 2018
 SCALE: 1"=40'
 SHEET NO.: 12



Signal System Note:
 Signals at Shell Toomer Pkwy., I-85 NB
 Ramps, I-85 SB Ramps, and Veterans
 Parkway to be coordinated.

Project SCS1



Legend
 Required Pavement

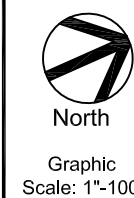
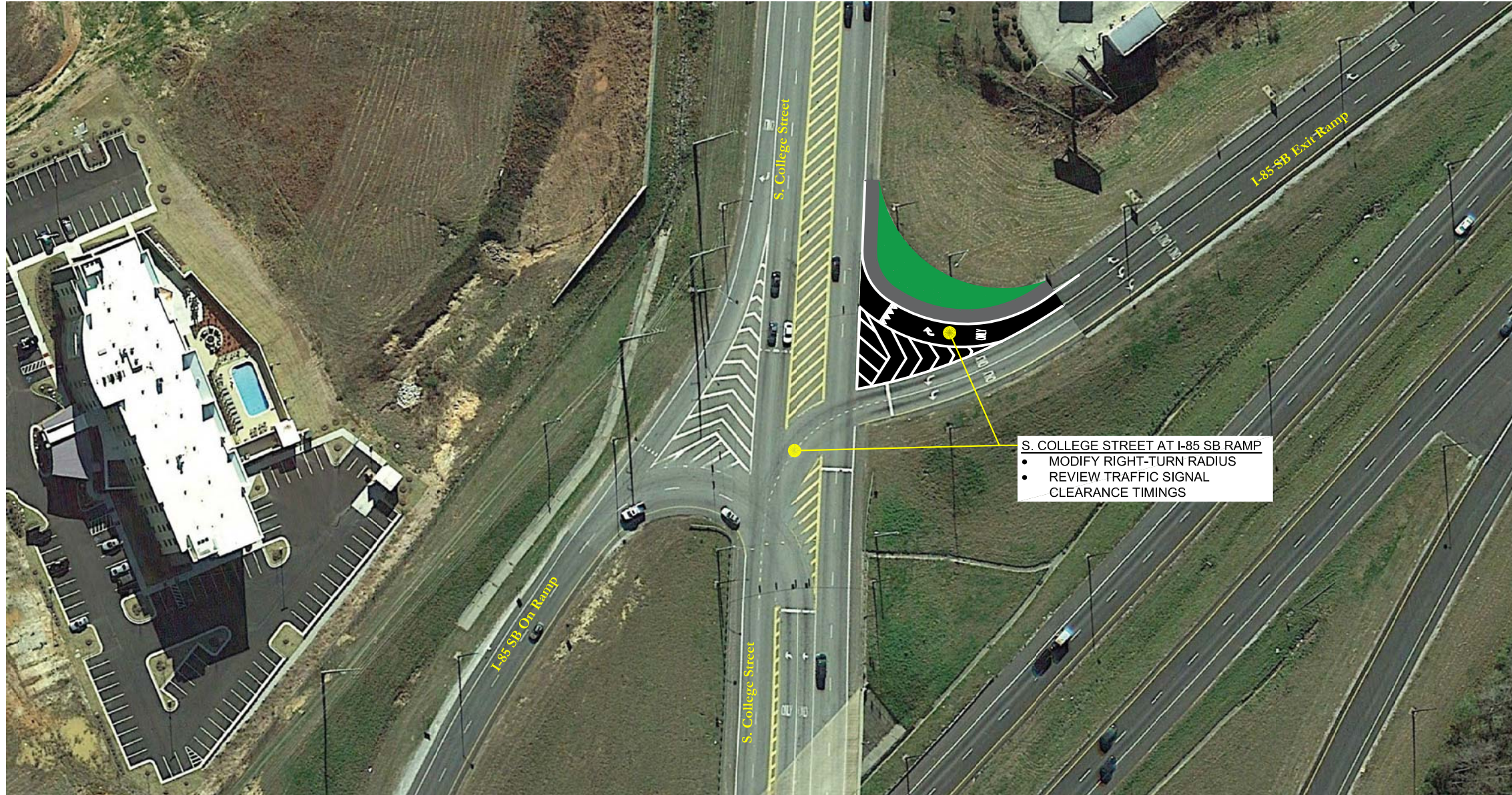


Figure 4
 S. College St. at
 Shell Toomer Parkway
 Existing Improvements
 College Street
 Auburn, Alabama

October 2018



Page 16



Signal System Note:
 Signals at Shell Toomer Pkwy., I-85 NB
 Ramps, I-85 SB Ramps, and Veterans
 Parkway to be coordinated.

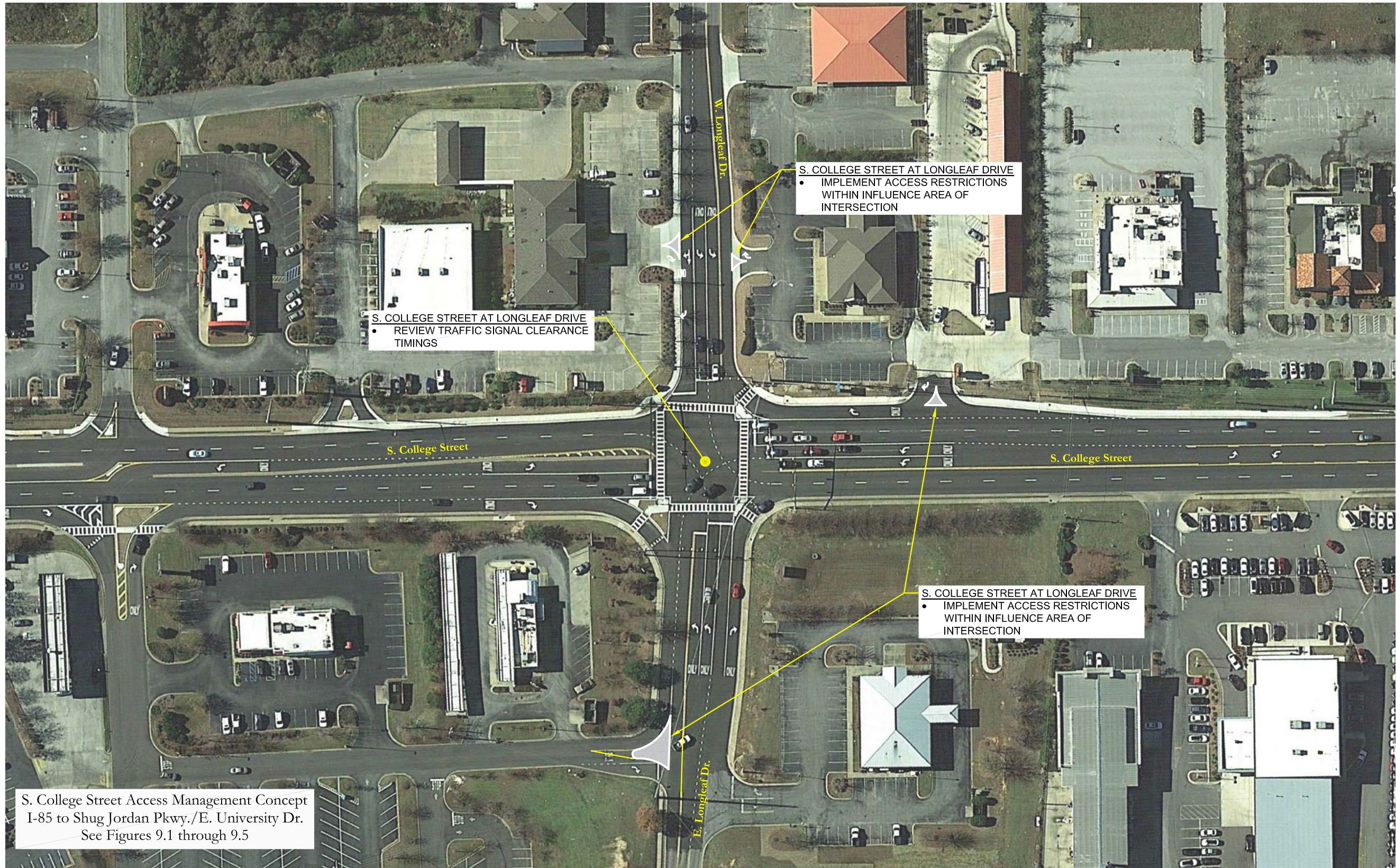
Project SCS2

SKIPPER
 CONSULTING INC

Legend	
	Required Pavement
	Required Grass


 North
 Graphic
 Scale: 1"=100'

Figure 5
S. College St. at I-85 SB Ramps
 Existing Improvements
 College Street
 Auburn, Alabama
 October 2018



S. College Street Access Management Concept
 I-85 to Shug Jordan Pkwy./E. University Dr.
 See Figures 9.1 through 9.5

Signal System Note:
 Signals at Longleaf Drive and EUD/Shug
 Jordan Parkway to be coordinated.

Project SCS5

SKIPPER
 CONSULTING INC



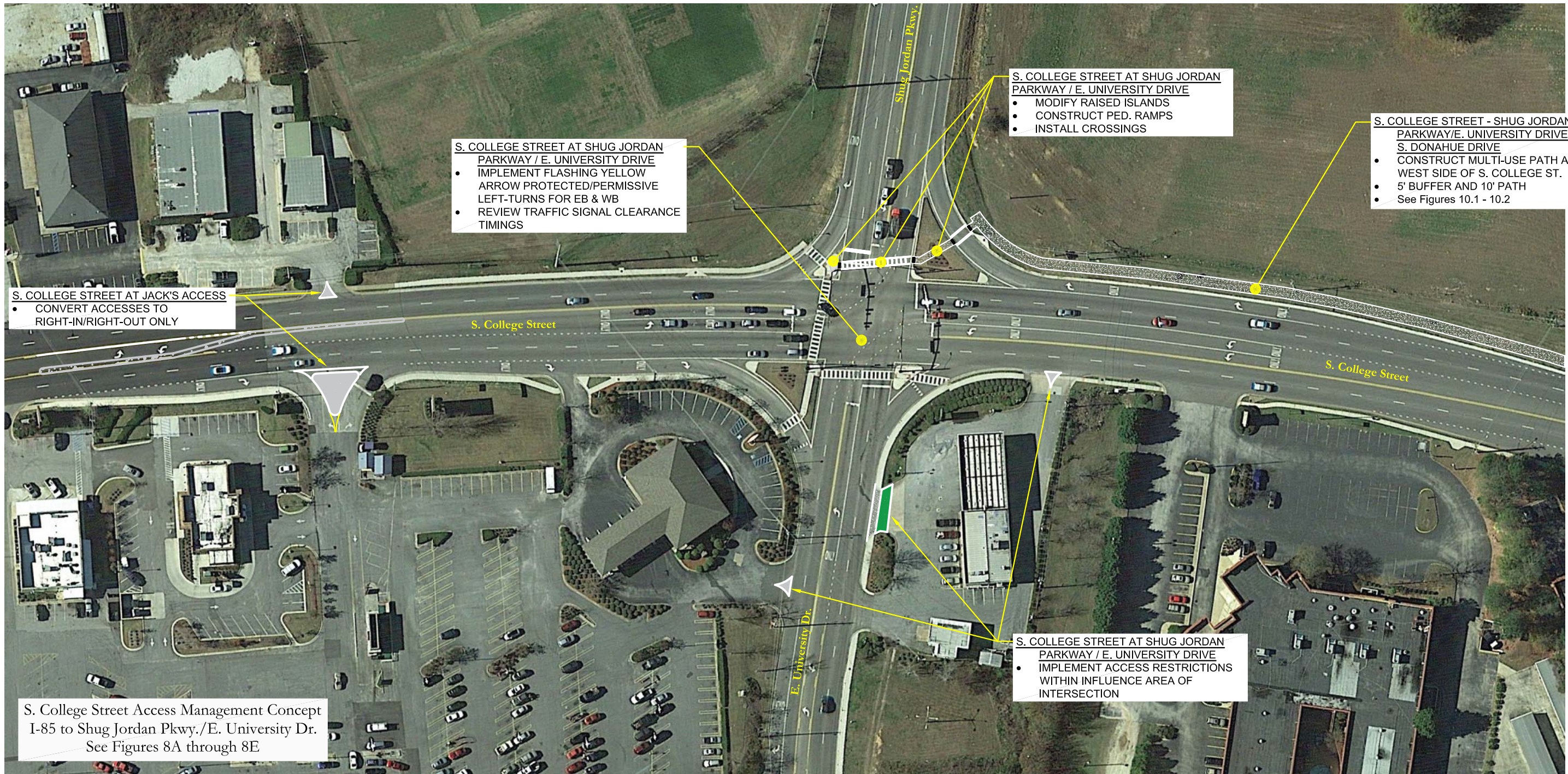
Legend	
	Required Pavement
	Raised Concrete Island



Figure 6
S. College St. at Longleaf Dr.
 Existing Improvements
 College Street
 Auburn, Alabama

October 2018

Page 18



Note: Pedestrian ramps shall include tactile warning strips and truncated domes per ADA.

Signal System Note:
Signals at Longleaf Drive and EUD/Shug Jordan Parkway to be coordinated.

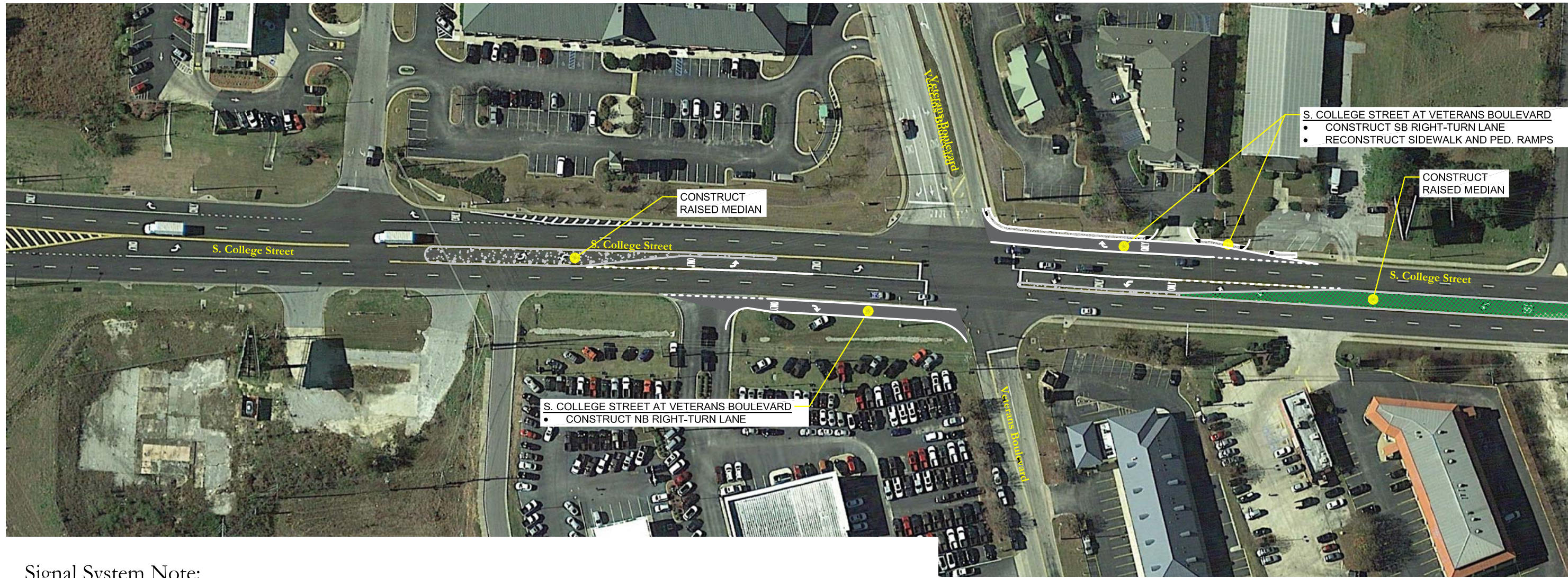
Project SCS6

SKIPPER
CONSULTING INC

Legend	
	Required Pavement
	Required Grass
	Required Multi-Use Path/Sidewalk
	Required Ped. Ramp

North
Graphic Scale: 1"=100'

Figure 7
S. College St. at Shug Jordan Parkway / E. University Drive
Existing Improvements
College Street
Auburn, Alabama



Signal System Note:
 Signals at Shell Toomer Pkwy., I-85 NB Ramps, I-85 SB Ramps, and Veterans Parkway to be coordinated.

Note: Pedestrian ramps shall include tactile warning strips and truncated domes per ADA.



Project SCS7



Legend	
	Required Grass/Median
	Required Raised Median

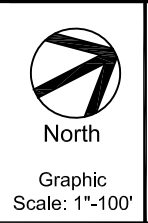


Figure 8B
 S. College St. - I-85 to Shug Jordan
 Parkway / E. University Drive
 Access Management Concept
 College Street
 Auburn, Alabama
 February 2019



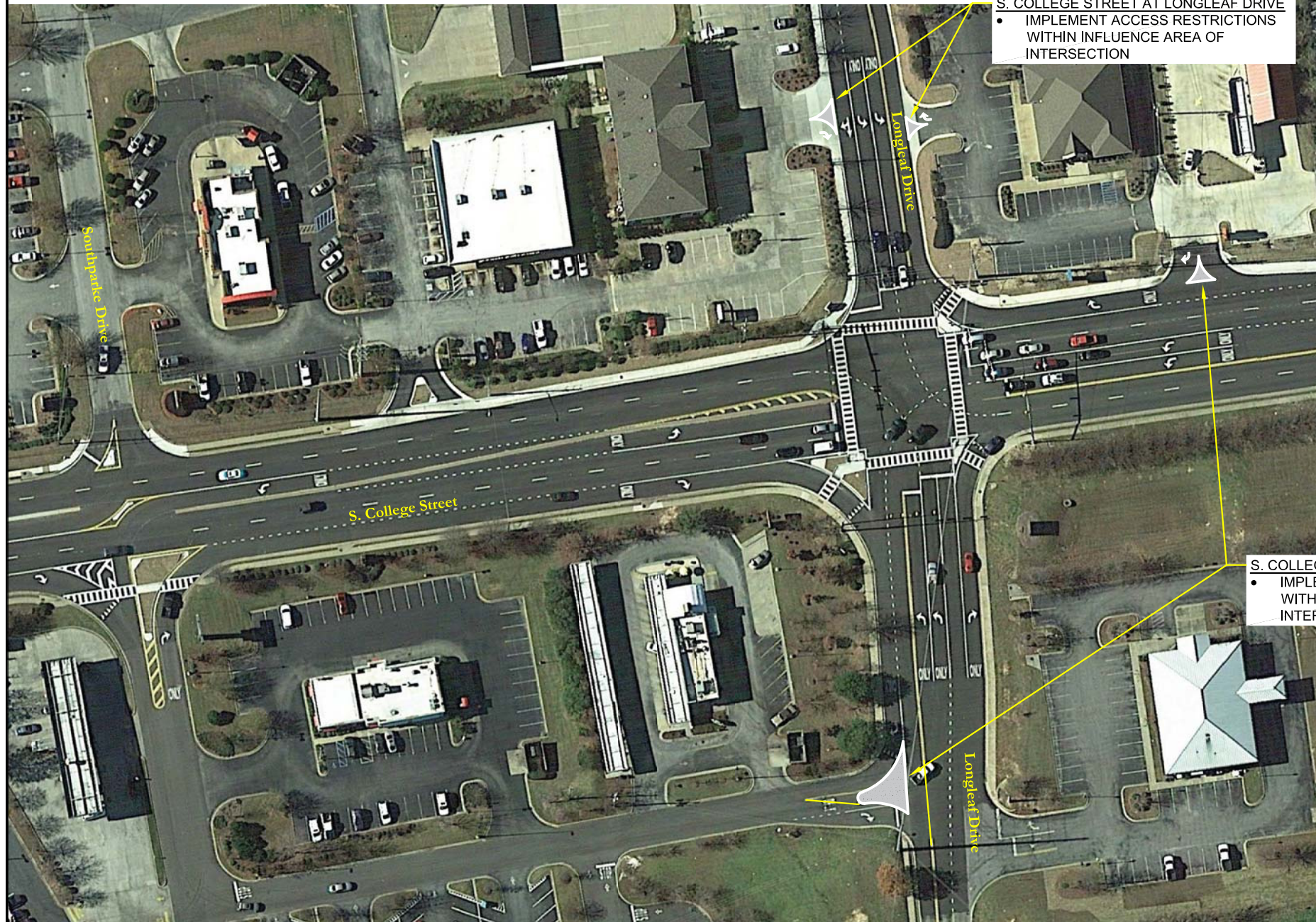
Project SCS7



Legend	
	Required Grass/Median
	Required Raised Median





Figure 8C
 S. College St. - I-85 to Shug Jordan Parkway / E. University Drive
 Access Management Concept
 College Street
 February 2019 Auburn, Alabama Page 22



Project SCS7



Legend	
	Required Grass/Median
	Required Raised Median



Graphic Scale: 1"=100'

Figure 8D
 S. College St. - I-85 to Shug Jordan
 Parkway / E. University Drive
 Access Management Concept
 College Street
 February 2019 Auburn, Alabama Page 23

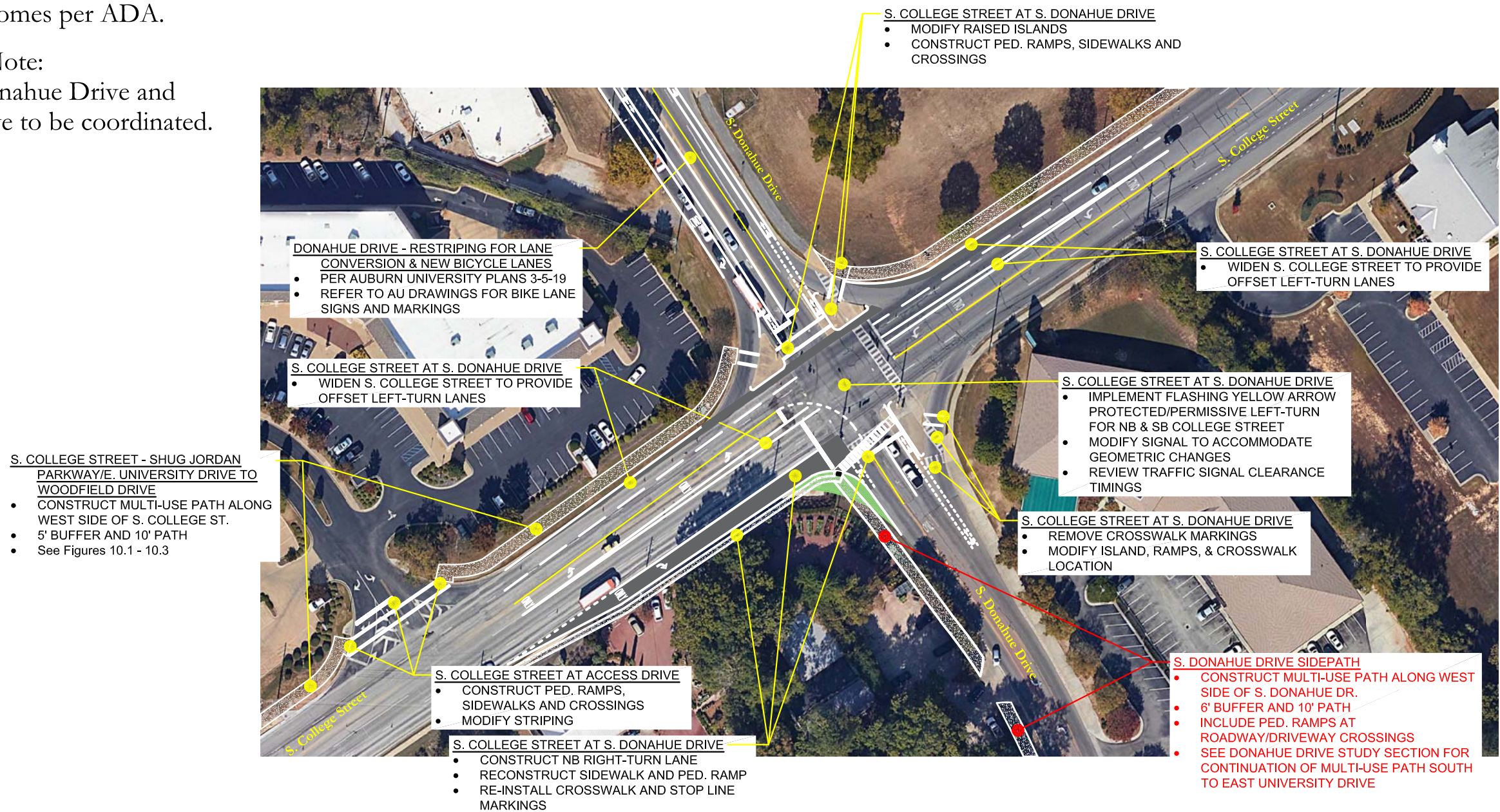


Project SCS7

	Legend Required Grass/Median Required Raised Median	 North Graphic Scale: 1"=100'	Figure 8E S. College St. - I-85 to Shug Jordan Parkway / E. University Drive Access Management Concept College Street February 2019 Auburn, Alabama Page 25

Note: Pedestrian ramps shall include tactile warning strips and truncated domes per ADA.

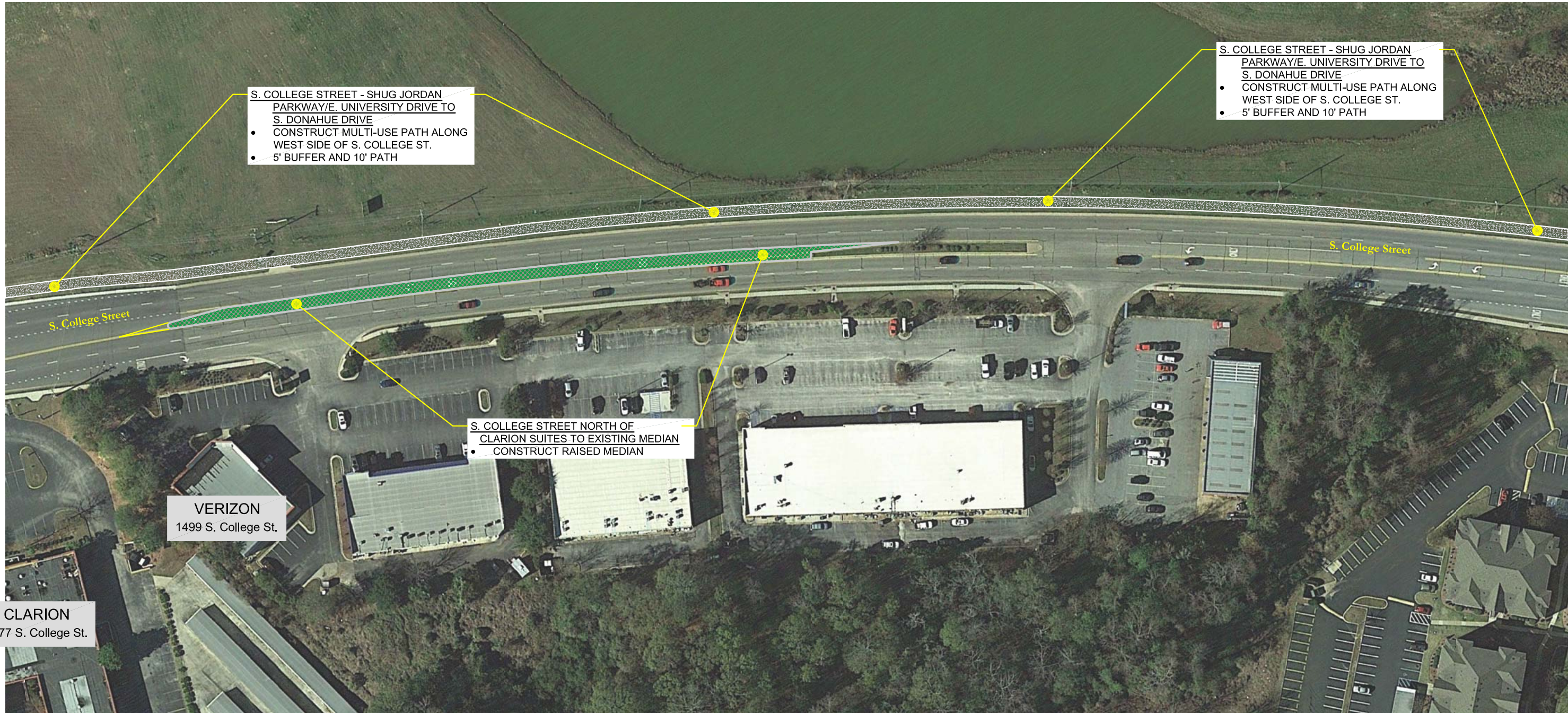
Signal System Note:
Signals at S. Donahue Drive and Woodfield Drive to be coordinated.



NOTATION LEGEND:
IMPROVEMENTS RECOMMENDED FOR EXISTING CONDITIONS ARE SHOWN FOR REFERENCE.
IMPROVEMENTS RECOMMENDED FOR FUTURE CONDITIONS ARE SHOWN IN RED.

Project SCS8

	Legend Required Pavement Required Grass Required Multi-Use Path/Sidewalk Required Ped. Ramp	 North Graphic Scale: 1"-100'	Figure 22 S. College St. at S. Donahue Dr. Future Improvements College Street Auburn, Alabama October 2018	Page 50
	October 2018			



Project SCS9

SKIPPER
CONSULTING INC

Legend	
	Required Pavement
	Required Grass
	Required Multi-Use Path/Sidewalk



Figure 10A
S. College St. - Shug Jordan Pkwy./
East University Dr. to Woodfield Dr.
Existing Improvements
College Street
Auburn, Alabama

February 2019 Page 26



Project SCS9



Legend	
	Required Pavement
	Required Grass
	Required Multi-Use Path/Sidewalk



Figure 10B
 S. College St. - Shug Jordan Pkwy./
 East University Dr. to Woodfield Dr.
 Existing Improvements
 College Street
 Auburn, Alabama
 February 2019 Page 27



S. COLLEGE STREET - SHUG JORDAN PARKWAY/E. UNIVERSITY DRIVE TO WOODFIELD DRIVE

- CONSTRUCT MULTI-USE PATH ALONG WEST SIDE OF S. COLLEGE ST.
- 5' BUFFER AND 10' PATH

S. COLLEGE STREET AT WOODFIELD DRIVE

- CONSTRUCT NB RIGHT-TURN LANE
- RECONSTRUCT SIDEWALK AND PED. RAMPS

S. COLLEGE STREET

- ACCESS MANAGEMENT CURRENTLY UNDER CONSTRUCTION

Project SCS9






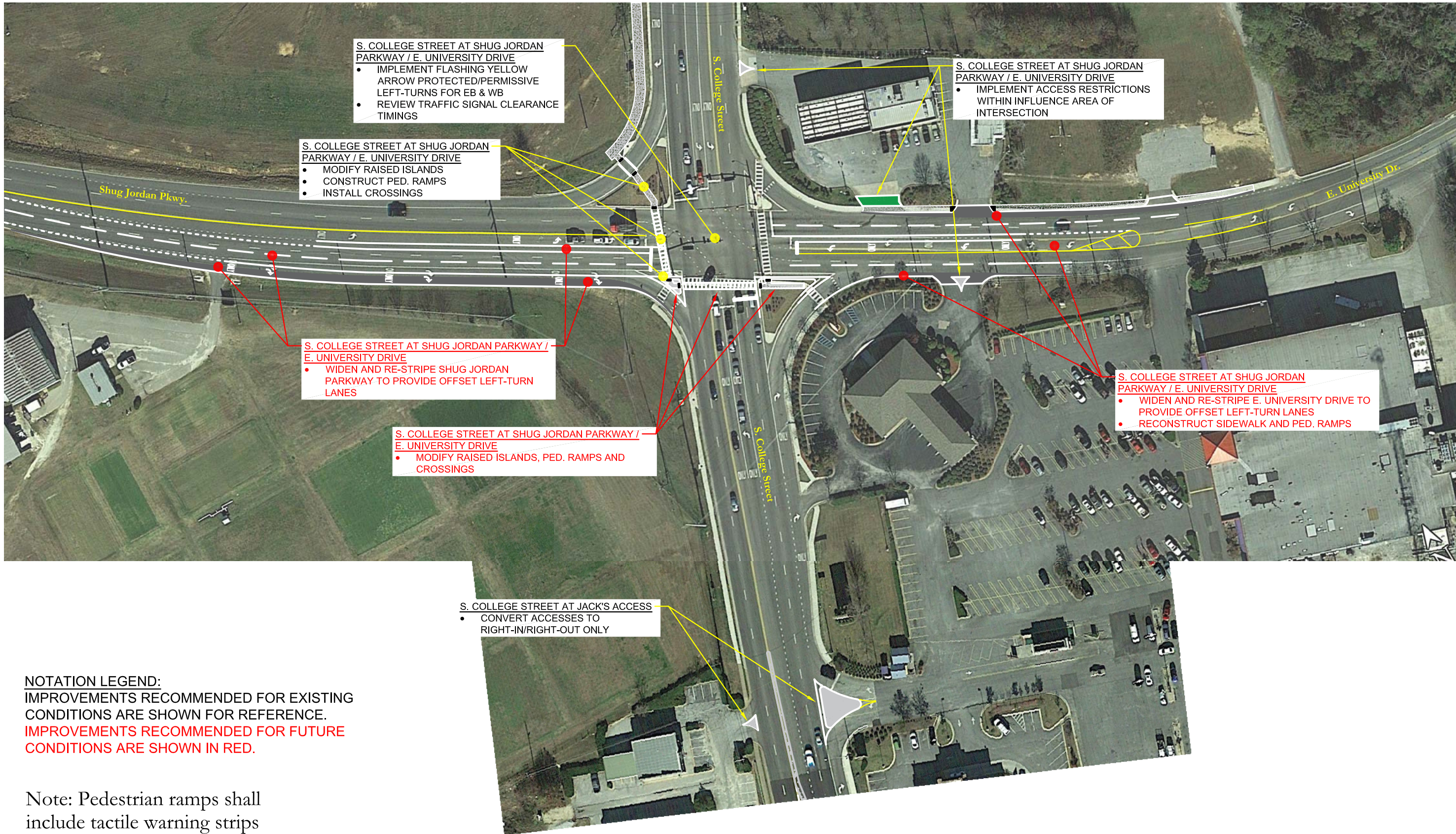
Legend	
	Required Pavement
	Required Grass
	Required Multi-Use Path/Sidewalk



Figure 10C
 S. College St. - Shug Jordan Pkwy./
 East University Dr. to Woodfield Dr.
 Existing Improvements
 College Street
 Auburn, Alabama
 February 2019



Note: Pedestrian ramps shall include tactile warning strips and truncated domes per ADA.

Project SCS10



Legend	
	Required Pavement
	Required Grass
	Required Multi-Use Path/Sidewalk
	Required Ped. Ramp



Figure 21
 S. College St. at Shug Jordan Parkway / E. University Drive
 Future Improvements
 College Street
 Auburn, Alabama
 October 2018



Note: Pedestrian ramps shall include tactile warning strips and truncated domes per ADA.